

*NEW YORK STATE GRANGE
LEGISLATIVE PROGRAM
2022 AND 2023*



*CINDY BENSON-POLLARD
401 CHARLES AVENUE
SYRACUSE, NY 13209
315.413.9335
Cbenson81@msn.com*

NEW YORK STATE GRANGE LEGISLATIVE PROGRAM



We face many issues in our country today. None more so than the current geo-political divide that is so prevalent today. The need for an organization, like the Grange, is so very important. Everyone should be encouraged to be an active participant in our government.

Our State is facing issues which each Grange member should be aware of. By sharing information with our community, we are able to help everyone understand the issues that rural New York and America are facing today.

We must continue to be a voice for our rural areas. This is especially important with any changes to health care reform that are proposed. Many rural areas now face a serious shortage of physicians, nurses and health care facilities. Programs that will provide these needed services for our rural areas need to be a top priority. Adequate

funding should be included in any budget negotiations.

Mandate relief is still a priority that continues to keep our attention. No meaningful tax relief can be accomplished without some type of mandate relief for our local governments and school districts.

We suggest that your Grange review your legislative policy handbook and the top priorities for the current year. Choose one or two areas of interest. It does not have to be just agriculture; maybe something in education or health, transportation or taxation. Depending on which topic you choose, there are many opportunities that will allow you to share information with your community.

Working with the other departments in your Grange, you can make a difference. Your Grange should have a planning meeting for their activities for the year. This is a perfect time to discuss the issues that each department will be working on. By joining together, you can increase the potential of getting your message out to the community. You will also be able to get a better understanding of what is most important to your community.

Lecturers: We encourage you to work with your Legislative Chairperson to arrange an open meeting program, inviting appropriate leaders involved in the issue that you have chosen for the subject. Be sure to get the

word out to your community and invite them to come and be part of the discussion.

Legislative Committee/Chairperson: Chose a meeting or two, with permission from the Master, to set aside for the review of Grange policies. If there is something that we do not have policy on or policy that you would like to change, this is the perfect time to write a resolution.

Community Involvement: Work with the Lecturer and Legislative Chairperson on planning and executing the open meeting. This would be an excellent addition to your handbook submission. Be sure and take pictures, submit them for publication in your local newspapers. This will let everyone in your community know what your Grange is doing.

Youth and Juniors: Encourage your younger members to take part in your legislative effort. You might suggest that they make posters to place around the community. They could also write to local TV and radio stations to place a notice on their community bulletin boards about the meeting. A brief description of the topic of the meeting should be included so that everyone in the community will know what will be discussed at the meeting.

Family Advocacy: Possibly the members of this committee could lead in the efforts to serve as welcoming people to your Grange meeting. They could help with directing people to the proper meeting room. They could also be available to answer questions about the Grange prior to or after the meeting. Light refreshments give the opportunity to mingle with those attending and share the story of the Grange.

We encourage Grangers to contact the New York State Grange Leadership/Membership Directors for assistance in conducting public meetings, writing successful press releases, and organizing panel discussions.

This format encourages participation of all the departments and members of the Grange. Be gracious and welcoming to the members of your community and to the speakers that you have invited. Please be sure and say “Thank You.” This simple gesture can go a long way to cementing relationships established and to give the best impression of the Grange.

LEGISLATIVE PRIORITIES 2021



Determined at the October 2020 State Convention, the following concerns have been selected as our “Top Priorities” for 2021 and into the beginning of 2022. Because of the times of establishing policy and the cycle of the program year for State Grange, we point out that these priorities will continue until February 2022 when the list may change slightly, following action taken by the delegates at the State Grange Convention in October 2021.

1. Supports legislation that would enable dairy producers to receive a fair market price that would include regional fair market prices, farmer led milk production growth management plans and a smart dairy trade policy.
2. Supports meaningful reform to existing farm labor laws to improve conditions for farmers who hire employees.
3. Supports any mandate be fully funded by the government body who has issued the mandate.
4. Encourages our federal government to include in any funding bill monies that will maintain and repair our aging infrastructure especially in rural areas.
5. Supports tax incentives for telecommunication providers to install broadband internet service in rural areas not currently served.
6. Supports continued essential services by the USPS to meet the needs of rural America.
7. Supports meaningful immigration reform to simplify the process for farm employers to hire migrant labor.
8. Supports all efforts that will ensure continued funding of Social Security and Medicare, and that monies in the funds not be used for any other purpose.
9. Supports efforts to relieve the high cost of prescription drugs through negotiated prices, capping the amount of out-of-pocket costs for Medicare enrollees and penalizing drug companies who raise prices more than the rate of inflation.
10. Supports regulation reforms that would promote the use of telemedicine and telehealth services for rural areas.

A Grange is encouraged to cover in depth any of the above issues as topics for a

Lecturer's program or public meetings coordinated by the Legislative and Community Involvement chairpersons of a Grange. Local leaders from various groups are available to educate the Grange and the public on these issues. Please feel free to use them.

Grange leaders are reminded that these priorities may change during the program year following our state Grange convention in October 2021. The new list of priorities will be publicized in early 2022.



BEING PART OF THE LEGISLATIVE PROCESS:

The legislative work of the Grange is a wonderful tool that can be utilized to reach out to your community to join in the work of the Grange in this area. A Grange that is involved is well informed on local, state and national issues. Be sure that topics are important to your Grange and the community. If they know you are trying to make things better, then it may encourage others to want to join the effort.

1. Each Legislative Chairman should give a report at each meeting. Outlining issues that members should be aware of, activities of the State and National

Grange in their efforts to effect change in their respective legislatures.

2. Listen to the discussion and gain information as to how your members feel about a particular issue. Gather background information that will be useful in supporting your position.
3. Write a resolution to present to your Grange. After a discussion of the resolution, the Grange can choose to accept or reject the resolutions. Don't be disheartened if they don't approve it the first time. Again, learn from the discussion and change the resolution accordingly. Don't be offended if changes are suggested. It will help to make the resolution stronger.
4. Send your adopted resolution to your Pomona Grange along with all your background reference materials.
5. The Pomona Chairperson will coordinate the discussion of the resolutions at that level. The same process will be followed at the Pomona level. If the resolution is approved, it should be forwarded to the State Grange Legislative Director, with all background materials, for consideration at the annual State Grange convention.
6. Be sure that you consult the NYS Grange Legislative Handbook, developed each year, so that your position is not currently covered by current policy. These positions cover issues for five years and are determined by delegates at the annual convention. They can also be found on our website: www.nysgrange.org.
7. Be sure to let the community know what you are doing. Use your local

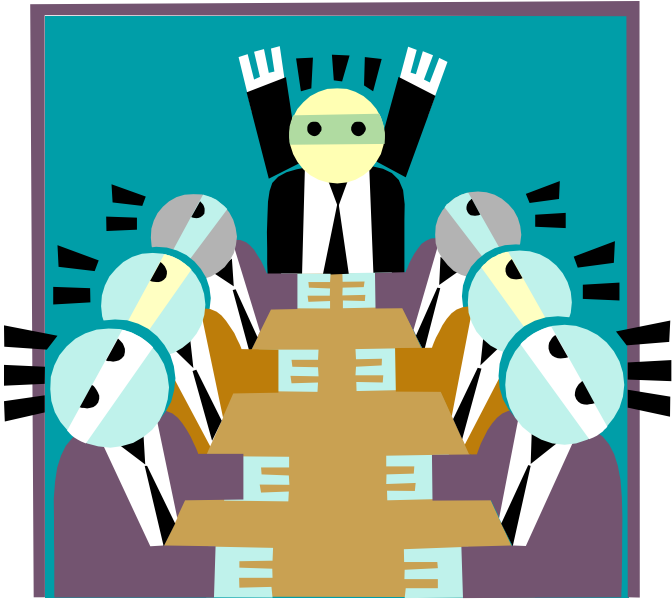
newspaper, radio or television, if possible. Share the information.

8. Please let your local and state governmental representatives know what issues that your Grange is supporting or opposing. Please participate in the State Grange's regional legislative conferences when they are held in your area. It is also important that you attend the annual State Legislative Day held at our Grange Headquarters in Cortland in September.
9. Share your activities with the State Legislative Director. This allows for sharing your successes with Grangers across the state.



ANNUAL LEGISLATIVE CONFERENCES:

The annual legislative conference is held on the fourth Saturday of September at our headquarters in Cortland. It is customary to distribute the resolution packets for State Grange convention to Delegates-at-Large at the State Legislative Day. This gives each delegate adequate time to review the resolutions and prepare for State Grange.



ARE YOU A RIGHT TO FARM COMMUNITY?

Farming is a vital part of every rural community. However, does your community protect farmers from those who do not understand farming and all the activities that surround it. Many people who move into rural areas looking for the open, green spaces do not appreciate the sounds, smells and activities of farmers.

If your community does not have right to farm protections in the zoning/codes, why doesn't your Grange lead the way to get them established/amended. The Legislative Department has developed a packet for your use to help you in this endeavor. Please contact the Legislative Director to obtain a copy of this packet. It includes talking points and suggested wording for changes and/or additions to your town's zoning/codes.

Be a leader in protecting farmers and their livelihoods in your communities.

STATE LEGISLATIVE DIRECTOR:

Cindy Benson-Pollard
401 Charles Avenue
Syracuse, NY 13209

Phone: 315-413-9335

Email: cbenson81@msn.com

Please put "Grange" in the subject line.

Resolutions for consideration by State Grange are to be sent to the above address by September 1st for that year's State Convention held in October.

STANDING COMMITTEE CO-CHAIRS:

Agriculture and Environment:

Ronald Schmidt
Diane Adams

Education:

Carolyn Ostrander
Art Holzmam

Federal Issues:

Mary Ann Morgan

Frank Stanton

Health Issues:

Emilie Sisson
Barbara Lavier

State Issues:

Carol Staffehl
Ralph Lewis

Taxation/Fiscal Responsibility:

Bruce Croucher
Rosanna Clark

HOW TO WRITE A RESOLUTION

Clear, concise title:

While a resolution need not have a title when it is submitted to Pomona or State Grange, a title from the originating body is helpful. It can be modified as the resolution moves along to higher bodies. If there is no title for a resolution once it reaches the State Legislative Director, one will be assigned.

Whereas sections:

State the problem or concern in the first section. ***State facts, not opinions!!*** Note that ‘WHEREAS,’ is capitalized; and a comma is followed by “and” at the end of each paragraph.

Each fact should be a separate paragraph, preceded by “WHEREAS,” and the last paragraph ends with “therefore be it.”

Resolve section:

Calls for the desired action and by whom the action is required... usually in support of some action or opposing some action. If there is more than one action or

solution requested, tie them together with the words “and be it further” at the end of the first “Resolve” section. Properly written, this paragraph is a summary of action desired and policy to be set. REMEMBER, the resolve section(s) of a resolution should make sense if none of the WHEREAS sections are present. Read the RESOLVE to see that the full meaning is clear when standing alone.

Signature/Date:

A resolution submitted to a higher level of Grange or to elected officials should be signed by two Grange leaders: Grange Master (President), Grange Secretary and/or Legislative Chairperson of that Grange. If the Grange can provide a Grange seal on the document, all the better, but it is not required. The date in the lower left hand corner is suggested so that the body receiving the resolution will know when the Grange adopted this position.

It is suggested that resolutions pass from Subordinate (Community) Granges through Pomona Granges and then, when adopted at that level, to be forwarded to State Grange when the issue is of state or national significance.

As the deadline for submission of resolutions to State Grange is September 1st of each year, a resolution from a Subordinate (Community) Grange must go directly to State Grange when there is no meeting of the respective Pomona Grange prior to the State Grange convention in October.

Resolutions postmarked or personally delivered after September 1st must have (30)

copies provided to be considered by the delegates at the October meeting.

Resolutions submitted to State Grange are to be sent directly to the Legislative Director at her home address:

Cindy Benson-Pollard
401 Charles Avenue
Syracuse, NY 13209

W H F R F A S

DISTRICT DIALOGUE

Subordinate/Community Granges or Pomona Granges are encouraged to arrange a visit to their State Senator and/or State Assemblyman's office sometime during the year. During the Legislative Session (January through June), state-elected representatives are generally in Albany Monday through Thursday each week. Good days to arrange a visit in the home office would be either Friday or Saturday.

Be prepared to discuss a few issues that your Grange is more interested in. Ask for the elected representative's opinion. Encourage their sponsorship of legislation that would bring about the desired action. If their opinion differs from the Grange's position, gather more information to share with your members back home which may influence a resolution to reverse our Grange position. Maybe you can encourage them to reverse

their opinion if it is different from the Grange's stand.

Above all, thank them for their time and for getting acquainted with members from the local Grange. You might have a copy of the current State Grange Policy Manual and the current year's priorities that you could leave with them. Encourage them to continue the dialogue if they would like an opinion on other issues that they deal with.

RESOURCES

www.NationalGrange.org

www.nysgrange.org

www.senate.state.ny.us

www.assembly.state.ny.us

Empire State Grange

National Grange Alerts

National Grange View from the Hill

Community and Rural Development Institute

